

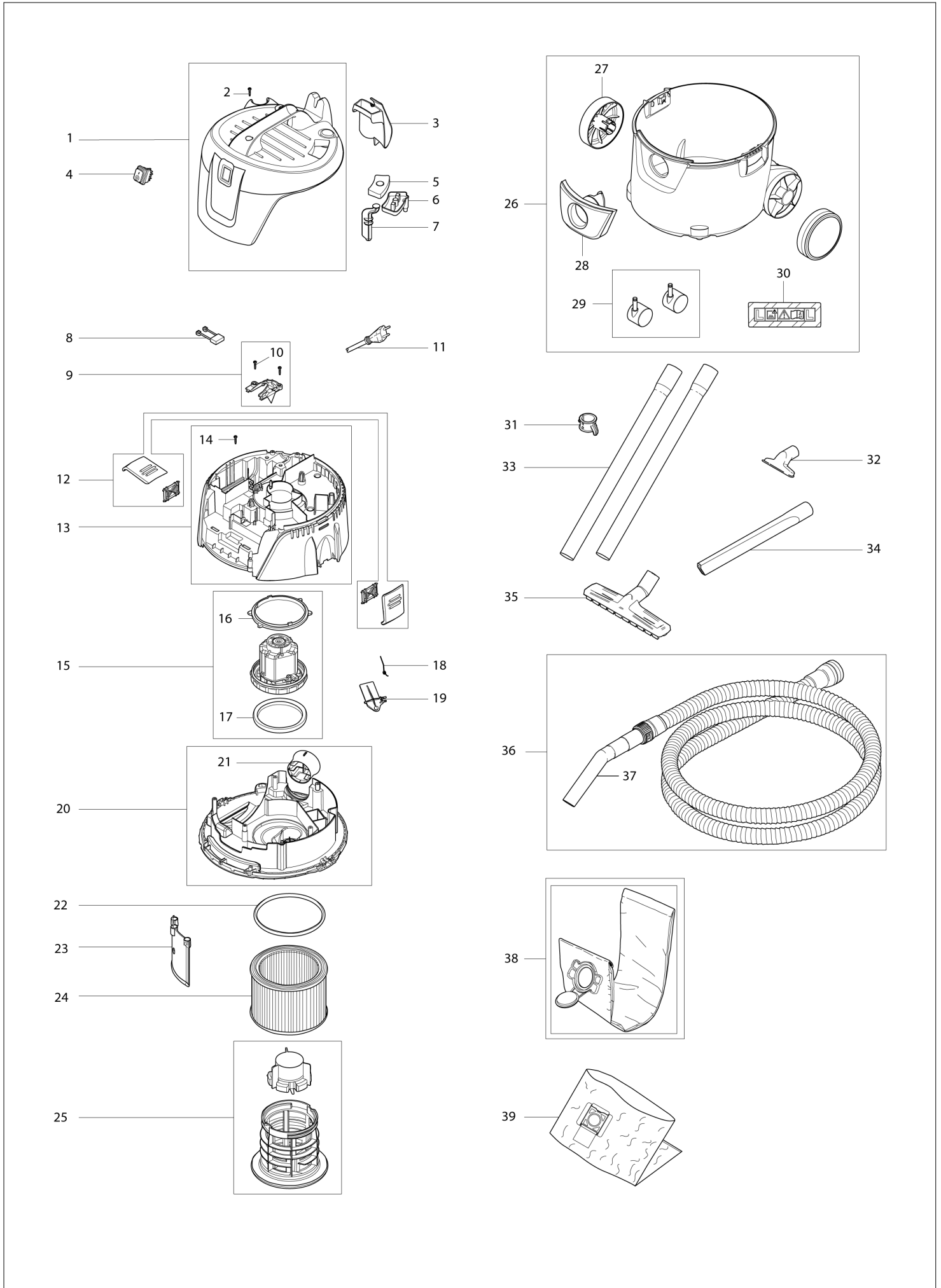


Diagram / Parts List

VC2000L

VACUUM CLEANER

(DE) VC2000L / VACUUM CLEANER



VC2000L / VACUUM CLEANER

Item	Sub	Parts No.	Parts Description	Qty	I/C	E/C No.	Close No.	Remark
001		W107419618	COVER	1				
	D10		INC. 2					
002		W302003704	SCREW 5X18 TX20	2			Y08406	
002-1		W302004029	SCREW 5X18 TX20	2	O	Y08406		
003		W107409981	HOSE AND CABLE HOOK	1				
004		W107404540	SWITCH O-I	1				
005		W107409183	DEDUSTING KNOB	1				
006		W107409127	P&C DRAIN HOUSING	1				
007		W107409128	DEDUTING ROD	1				
008		W107404542	CAPACITOR 0.1 MICRO FARAD	1				
009		W107409125	CABLE OUTLET	1				
	D10		INC. 10					
010		W302003704	SCREW 5X18 TX20	2			Y08406	
010-1		W302004029	SCREW 5X18 TX20	2	O	Y08406		
011		W302002394	POWER CORD CEE 7/7	1				
012		W107409130	KIT LOCKING CLAMP	2				
013		W107409132	CLAMPING PLATE	1				
	D10		INC. 14					
014		W302003704	SCREW 5X18 TX20	6			Y08406	
014-1		W302004029	SCREW 5X18 TX20	6	O	Y08406		
015		W107409160	MOTOR 220-240V 1000 W	1				
	D10		INC. 16,17					
016		W107409163	UPPER MOTOR SEALING	1				
017		W107409164	LOWER MOTOR SEALING	1				
018		W909100083	TORSION SPRING	1				
019		W107409129	DEDUSTING FLAP	1				
020		W107409166	BASE PLATE WITH AIR OUTLET	1				
	D10		INC. 21					
021		W107409167	AIR OUTLET	1				
022		W107409165	SEALING FILTER	1				
023		W107409159	DEFLECTOR SHIELD	1				
024		P-70219	FILTER ELEMENT	1				
025		W107402646	KIT FILTER SUPPORT CAGE +FLOAT	1				
026		W107419619	MAKITA CONTAINER 20L	1				
	D10		INC. 27-30					
027		W107409170	WHEEL D130	2				
028		W107409169	INLET FITTING >VC2512L<	1				
029		W140642250	KIT CASTOR WHEELS 50MM	1				
030		W302004200	LABEL >DUST CLASS L<	1				
031		W107409979	TUBE HOLDER KIT	1				
032		W000014295	NOZZLE UNIVERSAL	1				
033		P-72942	SUCTION TUBE 35X520MM 2PCS.	1				
034		W000029541	CREVICE NOZZLE	1				
035		W107402706	FLOOR NOZZLE 36X260MM	1				
036		P-81739	SUCTION HOSE D32X3500 W/TUBE	1				
	D10		INC. 37					
037		W107413340	HAND TUBE WITH REGULATION	1				
038		P-72899	FILTER BAG	1				
039		P-70297	DISPOSAL BAG	1				

Interchange
 O : Yes
 X : No
 < : the new part can be substituted for the current.
 > : the current part can be substituted for the new.
 S : Interchangeable as a set.