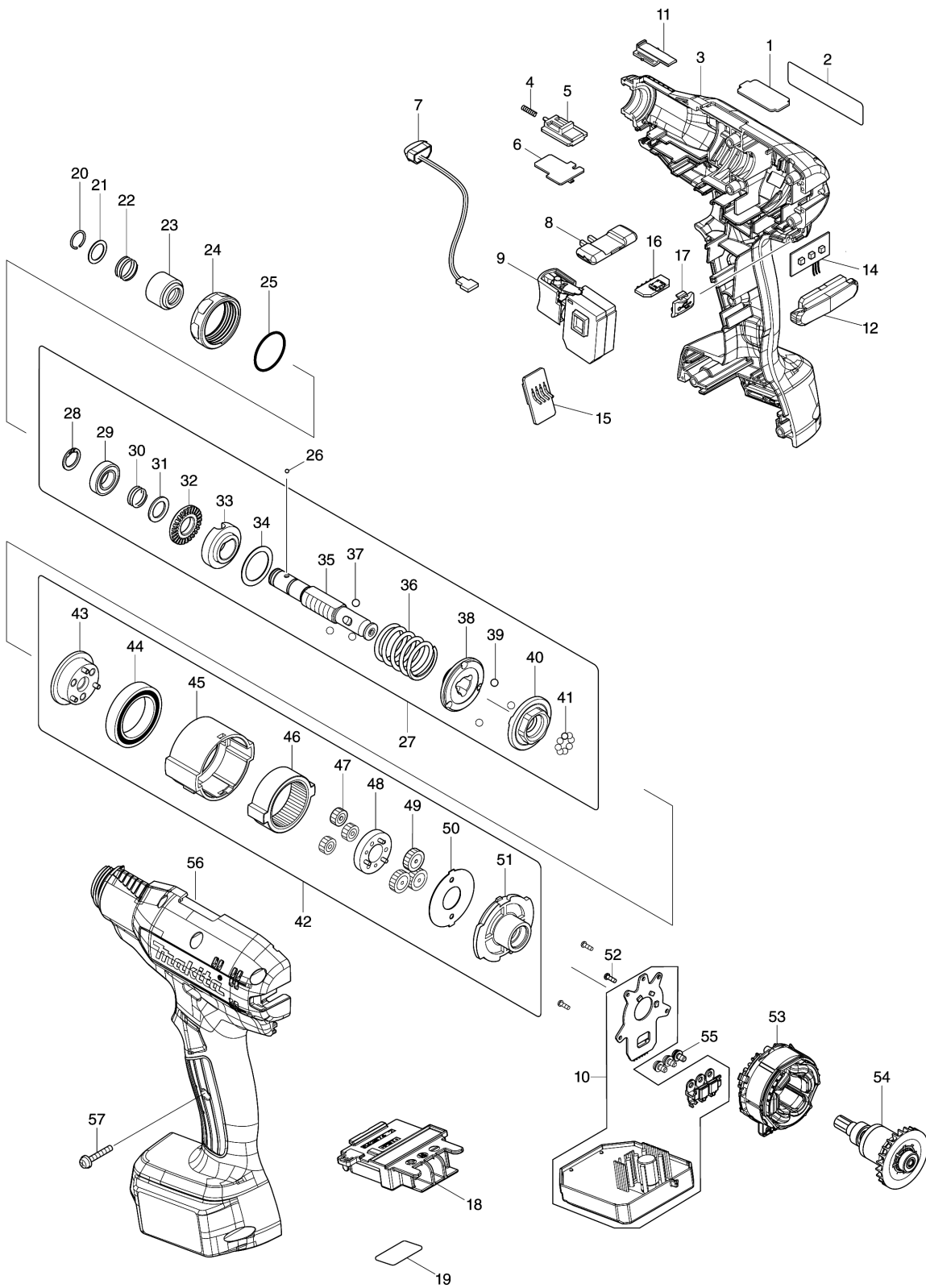


Model No.DFT025F CORDLESS SCREWDRIVER



Model No.DFT025F CORDLESS SCREWDRIVER

Položka	Objednávacie číslo	Popis	Zmena	ks	New/Old	Možnosť 1	Možnosť 2	Poznámka
001	345647-6	PLATE L		1				
002	857U36-4	DFT025F NAME PLATE		1				
003	183R48-6	HOUSING SET		1				
C10	263005-3	RUBBER PIN 6		2				
C20	931002-4	HEX. NUT M3		7				
D10		INC. 56						
004	233025-1	COMPRESSION SPRING 2		1				
005	140U90-8	SWITCH LEVER COMPLETE		1				
006	620D61-4	SENSOR CIRCUIT		1				
007	620521-2	LED CIRCUIT		1				
008	457469-3	F/R CHANGE LEVER		1				
009	651082-1	SWITCH C3JW-1B-S		1				
010	620D88-4	CONTROLLER		1				
011	412712-7	CHANGE PLATE		1				
012	457484-7	LENS		1				
014	620622-6	LED CIRCUIT		1				
015	620621-8	BUZZER CIRCUIT		1				
016	620A99-1	USB CIRCUIT		1				
017	144709-5	USB COVER COMPLETE		1				
018	643874-2	TERMINAL		1				
019	857U40-3	DFT025F SERIAL NO. LABEL		1				
020	233930-2	RING SPRING 9		1				
021	267070-4	FLAT WASHER 10		1				
022	232374-3	COMPRESSION SPRING 10A		1				
023	161607-8	BIT SLEEVE		1				
024	457530-6	LOCK NUT M28 BLACK		1				
025	213836-0	O-RING 22		1				
026	216015-9	STEEL BALL 2.4		2				
027	123937-5	CLUTCH ASSEMBLY 2M		1	*			
D10		INC. 28-41			*			
027-1	122B09-5	CLUTCH ASSEMBLY 2M R	<	1				
D10		INC. 28-41						
028	961026-6	RETAINING RING S-10		1				
029	210076-1	BALL BEARING 6800LLB		1				
030	232375-1	COMPRESSION SPRING 10B		1				
031	267047-9	FLAT WASHER 10		1				
032	326953-8	LOCK NUT M12		1				
033	144421-7	ADJUST RING COMPLETE		1				
034	253391-0	FLAT WASHER 18		1				
035	326944-9	SPINDLE M		1	*			
035-1	327644-4	SPINDLE M R	<	1	*			
035-2	327644-4	SPINDLE M R	O	1				
036	232372-7	COMPRESSION SPRING 18A		1				
037	216024-8	STEEL BALL 4		3				
038	223185-7	CAM A		1				

Please order the parts with part number.

Print Date 15/12/2021

Model No.DFT025F CORDLESS SCREWDRIVER

Položka	Objednávacie číslo	Popis	Zmena	ks	New/Old	Možnosť 1	Možnosť 2	Poznámka
039	216024-8	STEEL BALL 4		3				
040	223186-5	CAM B		1				
041	216001-0	STEEL BALL 3.5		8				
042	127682-4	GEAR ASSEMBLY O		1				
D10		INC. 43-51						
043	144424-1	CARRIER COMPLETE B		1				
044	211375-4	BALL BEARING 6805LLB		1				
045	412713-5	GEAR CASE		1				
046	221546-5	INTERNAL GEAR 47		1				
047	221543-1	SPUR GEAR 13		3				
048	144422-5	SPUR GEAR 20 COMPLETE		1				
049	221544-9	SPUR GEAR 18		3				
050	267774-8	LOCK WASHER		1				
051	418003-4	MOTOR BRACKET		1				
052	266490-9	TAPPING SCREW PT 2X6		3				
053	629A21-5	STATOR		1				
054	619440-7	ROTOR		1				
055	652069-6	FLAT HEAD SCREW M3X6		3				
056	183R48-6	HOUSING SET		1				
C10	263005-3	RUBBER PIN 6		2				
C20	931002-4	HEX. NUT M3		7				
D10		INC. 3						
057	251581-9	PAN HEAD SCREW M3X20		7				

Please order the parts with part number.

Print Date 15/12/2021