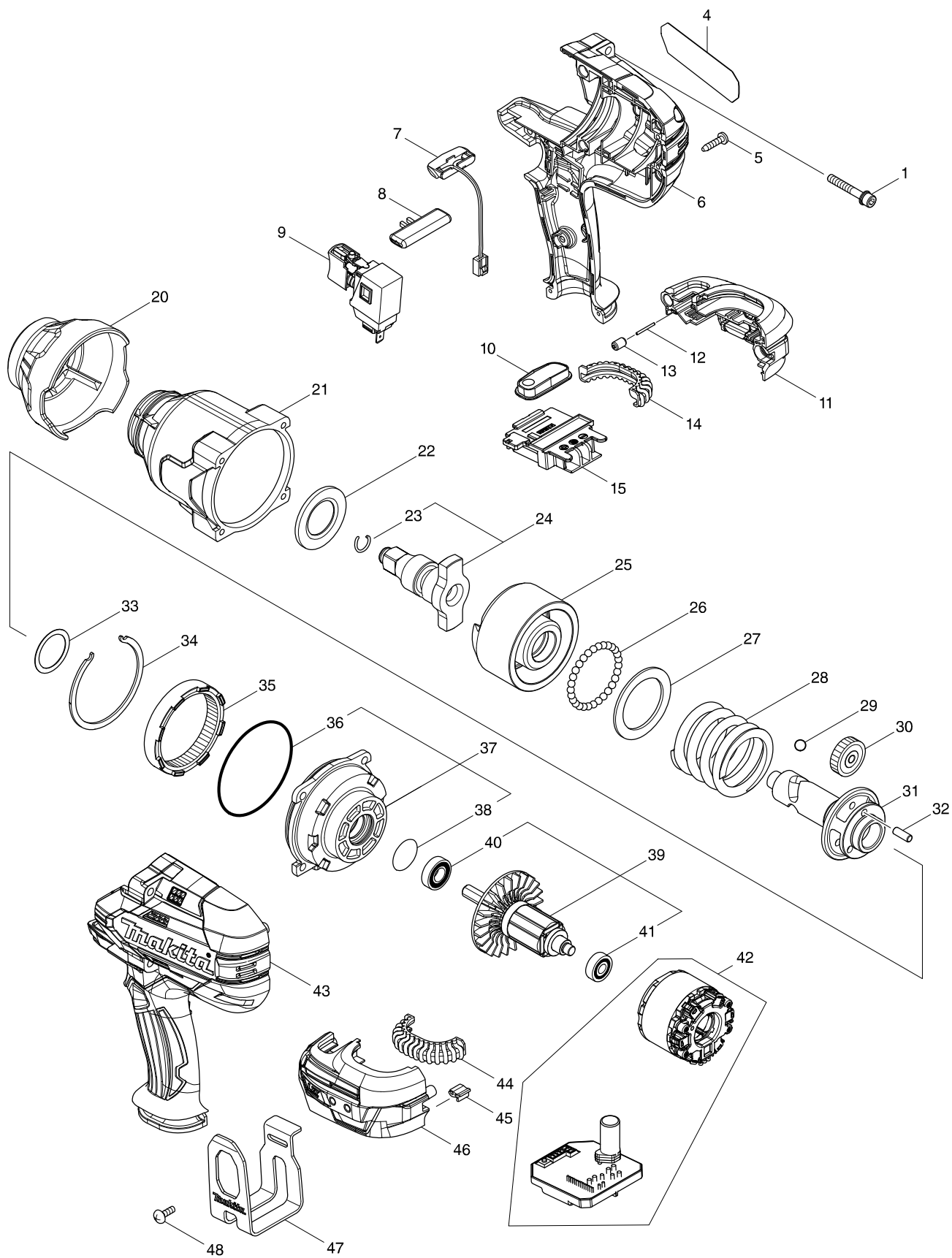


Model DTW1002 CORDLESS IMPACT WRENCH



Model DTW1002 CORDLESS IMPACT WRENCH

Strana 1 / 2

| Položka | Objednávacie | Popis | I/C | ks | N/O | Možnosť 1 | Možnosť 2 | Poznámka |
|---------|--------------|--------------------------------|-----|----|-----|-----------|-----------|----------|
| 001 | 251476-6 | H.S.H.BOLT M5X35 WITH WR | | 4 | | | | |
| 004 | 851K57-8 | DTW1002 NAME PLATE | | 1 | | | | |
| 005 | 266326-2 | SKRUTKA SAMOREZNÁ | | 9 | | | | |
| 006 | 183C08-8 | HOUSING SET | | 1 | * | | | |
| D10 | | INC. 43 | | | * | | | |
| 006-1 | 183H36-3 | HOUSING SET | O | 1 | | | | |
| D10 | | INC. 43 | | | | | | |
| 007 | 620351-1 | LED CIRCUIT | | 1 | | | | |
| 008 | 456268-0 | F/R CHANGE LEVER | | 1 | | | | |
| 009 | 143416-7 | SWITCH COMPLETE | | 1 | | | | |
| 010 | 143417-5 | SWITCH PLATE COMPLETE | | 1 | | | | |
| 011 | 183C12-7 | BATTERY HOUSING SET | | 1 | | | | |
| C10 | 263005-3 | KOLÍK GUMA 6 2414 | | 2 | | | | |
| D10 | | INC. 46 | | | | | | |
| 012 | 268284-8 | PIN 1.5 | | 1 | | | | |
| 013 | 263036-2 | RUBBER PIN 5 | | 1 | | | | |
| 014 | 424773-5 | CUSHION RUBBER | | 1 | | | | |
| 015 | 643899-6 | TERMINAL | | 1 | | | | |
| 020 | 424775-1 | BUMPER | | 1 | * | | | |
| 020-1 | 424978-7 | BUMPER | < | 1 | | | | |
| 021 | 143411-7 | HAMMER CASE COMPLETE | | 1 | * | | | |
| 021-1 | 144473-8 | HAMMER CASE COMPLETE | S | 1 | | | | |
| 022 | 346948-5 | WASHER 25 | | 1 | | | | |
| 023 | 231907-1 | PODLOŽKA PRUŽNÁ 10 | | 1 | * | | | |
| 023-1 | 232323-0 | RING SPRING 10 | < | 1 | | | | |
| 024 | 135717-7 | ANVIL W ASS'Y | | 1 | * | | | |
| D10 | | INC. 23 | | | * | | | |
| 024-1 | 135717-7 | ANVIL W ASS'Y | < | 1 | * | | | |
| D10 | | INC. 23 | | | * | | | |
| 024-2 | 135804-2 | ANVIL W ASS'Y | < | 1 | | | | |
| D10 | | INC. 23 | | | | | | |
| 025 | 326613-2 | HAMMER | | 1 | | | | |
| 026 | 216002-8 | GULKA OCEĽOVÁ 4,8 | | 29 | | | | |
| 027 | 267493-6 | FLAT WASHER 38 | | 1 | | | | |
| 028 | 234383-8 | COMPRESSION SPRING 38 | | 1 | | | | |
| 029 | 216009-4 | GULKA OCEĽOVÁ 7,1 6906/3620/RP | | 2 | | | | |
| 030 | 227391-6 | SPUR GEAR 24 | | 3 | * | | | |
| 030-1 | 226879-3 | SPUR GEAR 24 | < | 3 | * | | | |
| 030-2 | 226880-8 | SPUR GEAR 24 | O | 3 | | | | |
| 031 | 326611-6 | SPINDLE | | 1 | | | | |
| 032 | 268079-9 | PIN 5 | | 3 | | | | |
| 033 | 267494-4 | FLAT WASHER 25 | | 1 | | | | |
| 034 | 346947-7 | RETAINER | | 1 | | | | |
| 035 | 227392-4 | INTERNAL SPUR GEAR 54 | | 1 | | | | |
| 036 | 213720-9 | O-KRÚŽOK 67 | | 1 | | | | |
| 037 | 135718-5 | INTERNAL GEAR CASE ASS'Y | | 1 | | | | |
| D10 | | INC. 36,38 | | | | | | |
| 038 | 213961-7 | O-KRÚŽOK 22 AC3600 | | 1 | | | | |

Model DTW1002 CORDLESS IMPACT WRENCH

Strana 2 / 2

| Položka | Objednávacie | Popis | I/C | ks | N/O | Možnosť 1 | Možnosť 2 | Poznámka |
|---------|--------------|------------------------------------|-----|----|-----|-----------|-----------|----------|
| 039 | 519384-0 | ROTOR ASS'Y | | 1 | | | | |
| D10 | | INC. 40,41 | | | | | | |
| 040 | 210069-8 | Nd | | 1 | | | | |
| 041 | 211022-7 | LOŽISKO GULIČKOVÉ | | 1 | | | | |
| 042 | 629170-2 | STATOR COMPLETE | | 1 | * | | | |
| 042-1 | 629330-6 | STATOR COMPLETE | < | 1 | | | | |
| 043 | 183C08-8 | HOUSING SET | | 1 | * | | | |
| D10 | | INC. 6 | | | * | | | |
| 043-1 | 183H36-3 | HOUSING SET | O | 1 | | | | |
| D10 | | INC. 6 | | | | | | |
| 044 | 424773-5 | CUSHION RUBBER | | 1 | | | | |
| 045 | 424517-3 | CUSHION | | 1 | | | | |
| 046 | 183C12-7 | BATTERY HOUSING SET | | 1 | | | | |
| C10 | 263005-3 | KOLÍK GUMA 6 2414 | | 2 | | | | |
| D10 | | INC. 11 | | | | | | |
| 047 | 346949-3 | HOOK | | 1 | | | | |
| 048 | 251314-2 | SKRUTKA M4x12 LS0810/1013 | | 2 | | | | |
| A01B | ***DC18RC | DC18RC FAST CHARGER | | 1 | | | | |
| A01C | ***DC18RC | DC18RC FAST CHARGER | | 1 | | | | |
| A01D | ***DC18RC | DC18RC FAST CHARGER | | 1 | | | | |
| A02B | 197265-4 | BATTERY BL1840B SET | | 2 | | | | |
| A02C | 194204-5 | AKUMULÁTOR Li-ion BL1830 18V 3,0Ah | | 2 | * | | | |
| A02D | 197280-8 | BATTERY BL1850B SET | | 2 | | | | |
| A02-1C | 197600-6 | BATTERY BL1830B SET | < | 2 | | | | |
| A03B | 450128-8 | BATTERY COVER | | 1 | | | | |
| A03C | 450128-8 | BATTERY COVER | | 1 | | | | |
| A03D | 450128-8 | BATTERY COVER | | 1 | | | | |
| A04B | 821551-8 | KUFOR PVC 3 395x295x210mm | | 1 | | | | |
| C10 | 453974-8 | LATCH | | 4 | | | | |
| A04C | 821551-8 | KUFOR PVC 3 395x295x210mm | | 1 | | | | |
| C10 | 453974-8 | LATCH | | 4 | | | | |
| A04D | 821551-8 | KUFOR PVC 3 395x295x210mm | | 1 | | | | |
| C10 | 453974-8 | LATCH | | 4 | | | | |
| A05B | 837645-9 | INNER TRAY | | 1 | | | | |
| A05C | 837645-9 | INNER TRAY | | 1 | | | | |
| A05D | 837645-9 | INNER TRAY | | 1 | | | | |
| A06B | 808B76-1 | DTW1002RMJ INDICATION LABEL | | 1 | | | | |
| A06C | 808B78-7 | DTW1002RFJ INDICATION LABEL | | 1 | | | | |
| A06D | 808B80-0 | DTW1002RTJ INDICATION LABEL | | 1 | | | | |
| A07B | 808B77-9 | DTW1002RMJ PLASTIC CASE LABEL | | 2 | | | | |
| A07C | 808B79-5 | DTW1002RFJ PLASTIC CASE LABEL | | 2 | | | | |
| A07D | 808B81-8 | DTW1002RTJ PLASTIC CASE LABEL | | 2 | | | | |
| | | | | | | | | |
| | | | | | | | | |
| | | | | | | | | |
| | | | | | | | | |
| | | | | | | | | |