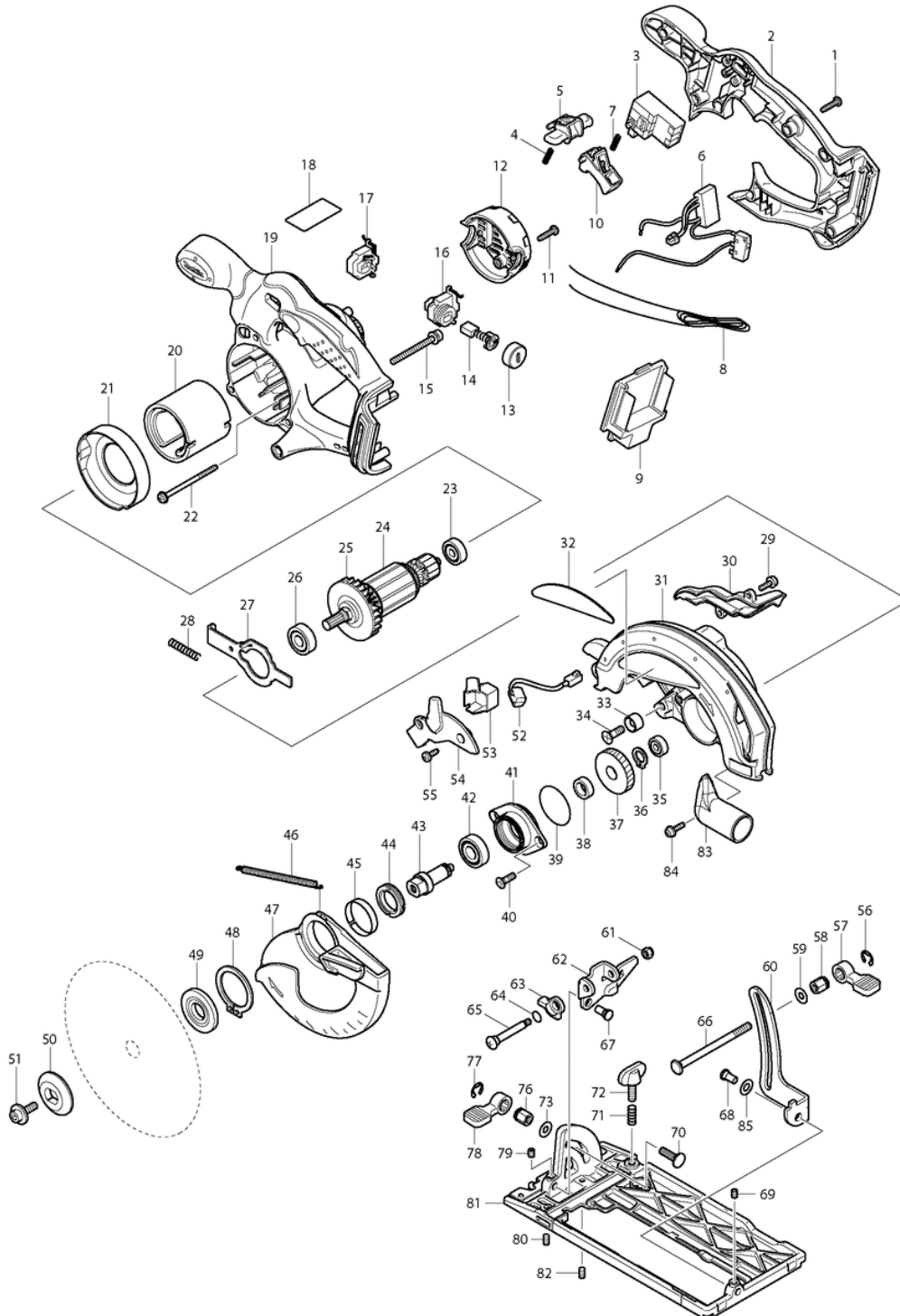




Makita Service Information / Model: DSS610





Makita Werkzeug Ges.m.b.H.

Airportstr. 4, 2401 Fischamend

Tel: 02232 / 777 00

Fax: 02232 / 777 00 - 40

Mail: verkauf@makita.at

Web: www.makita.at

Makita Service Information / Model: DSS610

POS	Bestell-Nr.	Artikelbeschreibung	Stk.	Stk.Preis
1	265995-6	SKRUTKA SAMOREZNÁ 4x18	6	N/A
2	141470-5	HANDLE COVER	1	N/A
3	650631-1	Switch	1	N/A
4	231469-9	COMPRESSION SPRING 4	1	N/A
5	419322-1	LOCK OFF LEVER	1	N/A
6	620088-0	POWER SUPPLY CIRCUIT	1	N/A
7	231469-9	COMPRESSION SPRING 4	1	N/A
9	644808-8	ANSCHLUSSKLEMME	1	N/A
10	419176-6	SWITCH LEVER	1	N/A
11	265995-6	SKRUTKA SAMOREZNÁ 4x18	2	N/A
12	419281-9	REAR COVER	1	N/A
13	643941-3	KRYTKA UHLÍKA 643941-3	2	N/A
14	194435-6	UHLÍKY CB-441	1	N/A
15	911263-2	SKRUTKA M5x40	3	N/A
16	643882-3	BRUSH HOLDER	1	N/A
17	643883-1	BRUSH HOLDER	1	N/A
18	815E89-3	DSS610 NAME PLATE	1	N/A
19	141471-3	MOTOR HOUSING Complete	1	N/A
20	638107-8	STATOR BSS610RF/BJR181RF/	1	N/A
21	419285-1	BAFFLE PLATE	1	N/A
22	266292-3	TAPPING SCREW M4x65	2	N/A
23	210023-2	LOŽISKO GULIČKOVÉ 627DDW	1	N/A
24	519173-3	ARMATURE ASS'Y 18V	1	N/A
24		*** INC. 23,25,26		N/A
25	241869-5	FAN 55	1	N/A
26	211061-7	LOŽISKO GULIČKOVÉ 6000LLB	1	N/A
27	346059-6	SHAFT LOCK	1	N/A
28	233092-6	PRUŽINA PRÍTLAČNÁ 5 233092-6	1	N/A
29	911118-1	SKRUTKA M4x12	2	N/A
30	419284-3	BLOWER NOZZLE	1	N/A
31	188045-9	BLADE CASE SET	1	N/A
31		*** INC. 32		N/A
32	819217-2	MAKITA LOGO PLATE BSS610SF	1	N/A
33	262049-0	KRÚŽOK GUMENÝ 6	1	N/A
34	251368-9	+ COUNTERSUNK SCREW M6	1	N/A
35	210028-2	BALL BEARING 606ZZ	1	N/A
36	961052-5	POISTNÝ KRÚŽOK S-12	1	N/A
37	227156-6	SPUR GEAR 52	1	N/A
38	257173-2	KRÚŽOK 12 5604R	1	N/A
39	213512-6	O RING 39	1	N/A



Makita Werkzeug Ges.m.b.H.

Airportstr. 4, 2401 Fischamend

Tel: 02232 / 777 00

Fax: 02232 / 777 00 - 40

Mail: verkauf@makita.at

Web: www.makita.at

Makita Service Information / Model: DSS610

POS	Bestell-Nr.	Artikelbeschreibung	Stk.	Stk.Preis
40	265034-2	SKRUTKA M5x16	2	N/A
41	318009-1	BEARING BOX	1	N/A
42	211131-2	LOŽISKO GULIČKOVÉ 6001DDW	1	N/A
43	324626-7	SPINDEL BSS610SF	1	N/A
44	285845-9	BEARING RETAINER 19-29	1	N/A
45	345469-4	THICKNESS RING	1	N/A
46	231821-1	TENSION SPRING 3	1	N/A
47	419286-9	SAFETY COVER BSS610SF	1	N/A
48	961152-1	RETAINING RING S-34	1	N/A
49	224397-5	PRÍRUBA 40 5621R/LS0714	1	N/A
50	224282-2	OUTER FLANGE 40	1	N/A
51	266133-3	SKRUTKA M6x20	1	N/A
52	631694-6	Led Circuit	1	N/A
53	419341-7	CONNECTOR BOX BSS610SF	1	N/A
54	419282-7	Light Cover BSS610SF	1	N/A
55	266026-4	SKRUTKA 4x12	2	N/A
56	961014-3	BLOKOVACÍ KRÚŽOK E-8 961014-3	1	N/A
57	272229-0	PÁČKA 40	1	N/A
58	252158-3	HEX. NUT M6	1	N/A
59	941151-9	PODLOZKA 6	1	N/A
60	345658-1	DEPTH GUIDE	1	N/A
61	252103-8	MATICA M5-8 252103-8	1	N/A
62	345657-3	ANGULAR GUIDE BSS610SF	1	N/A
63	317986-4	STOPPER	1	N/A
64	213062-1	O-KRÚŽOK 9 AN7000/BSR730SH	1	N/A
65	265084-7	(+) Truss Head Screw M5	1	N/A
66	266194-3	FLAT HEAD SCREW M6x90	1	N/A
67	256480-0	Shoulder Pin 6-7	1	N/A
68	256480-0	Shoulder Pin 6-7	1	N/A
69	266264-8	SKRUTKA IMBUS M5x6	1	N/A
70	251919-8	SKRUTKA 6X20	1	N/A
71	231007-7	COMPRESSION SPRING 6	1	N/A
72	251896-4	SCREW M5x20	1	N/A
73	941151-9	PODLOZKA 6	1	N/A
76	252133-9	MATICA M6 3901	1	N/A
77	961014-3	BLOKOVACÍ KRÚŽOK E-8 961014-3	1	N/A
78	272251-7	LEVER 30 BSS610SF	1	N/A
79	266264-8	SKRUTKA IMBUS M5x6	1	N/A
80	266229-0	HEX. SOCKET SET SCREW M5x8	1	N/A
81	154832-8	DOSKA ZAKLADNÁ BSS610SF	1	N/A



Makita Werkzeug Ges.m.b.H.

Airportstr. 4, 2401 Fischamend

Tel: 02232 / 777 00

Fax: 02232 / 777 00 - 40

Mail: verkauf@makita.at

Web: www.makita.at

Makita Service Information / Model: DSS610

POS	Bestell-Nr.	Artikelbeschreibung	Stk.	Stk.Preis
82	266229-0	HEX. SOCKET SET SCREW M5x8	1	N/A
83	419283-5	DUST NOZZLE	1	N/A
84	911118-1	SKRUTKA M4x12	1	N/A
85	253186-1	PODLOŽKA 7 4300SV/SB/LH1040/F	1	N/A
1001	164095-8	GUIDE RULE	1	N/A
1002	783203-8	HEX. WRENCH 5	1	N/A
1003	A-85101	T.C.T.SAW BLADE 165X24TX20	1	N/A
1004	141353-9	PLASTIC CARRYING CASE COMPLETE	1	N/A
1004	821551-8	CONNECTOR PLASTIC CASE (TYPE3)	1	N/A
1005	***DC18RC	DC18RC FAST CHARGER	1	N/A
1005	837642-5	INNER TRAY	1	N/A
1006	194204-5	BATTERY BL1830 SET	1	N/A
1006	194204-5	BATTERY BL1830 SET	2	N/A
1006	802U10-7	DSS610ZJ INDICATION LABEL	1	N/A
1006.2	194204-5	BATTERY BL1830 SET	1	N/A
1006.2	194204-5	BATTERY BL1830 SET	2	N/A
1007	802U19-9	DSS610RF PLASTIC CASE LABEL	1	N/A
1007	802U23-8	DSS610RFE PLASTIC CASE LABEL	1	N/A
1007	837642-5	INNER TRAY	1	N/A
1007	802U17-3	DSS610ZJ PLASTIC CASE LABEL	2	N/A
1008	450128-8	BATTERY COVER	1	N/A
1009	802U09-2	DSS610RFJ INDICATION LABEL	1	N/A
1010	802U22-0	DSS610RFJ PLASTIC CASE LABEL	2	N/A
5001	620258-1	KONTROLLEINHEIT	1	N/A
5002	688163-8	LINE FILTER	1	N/A