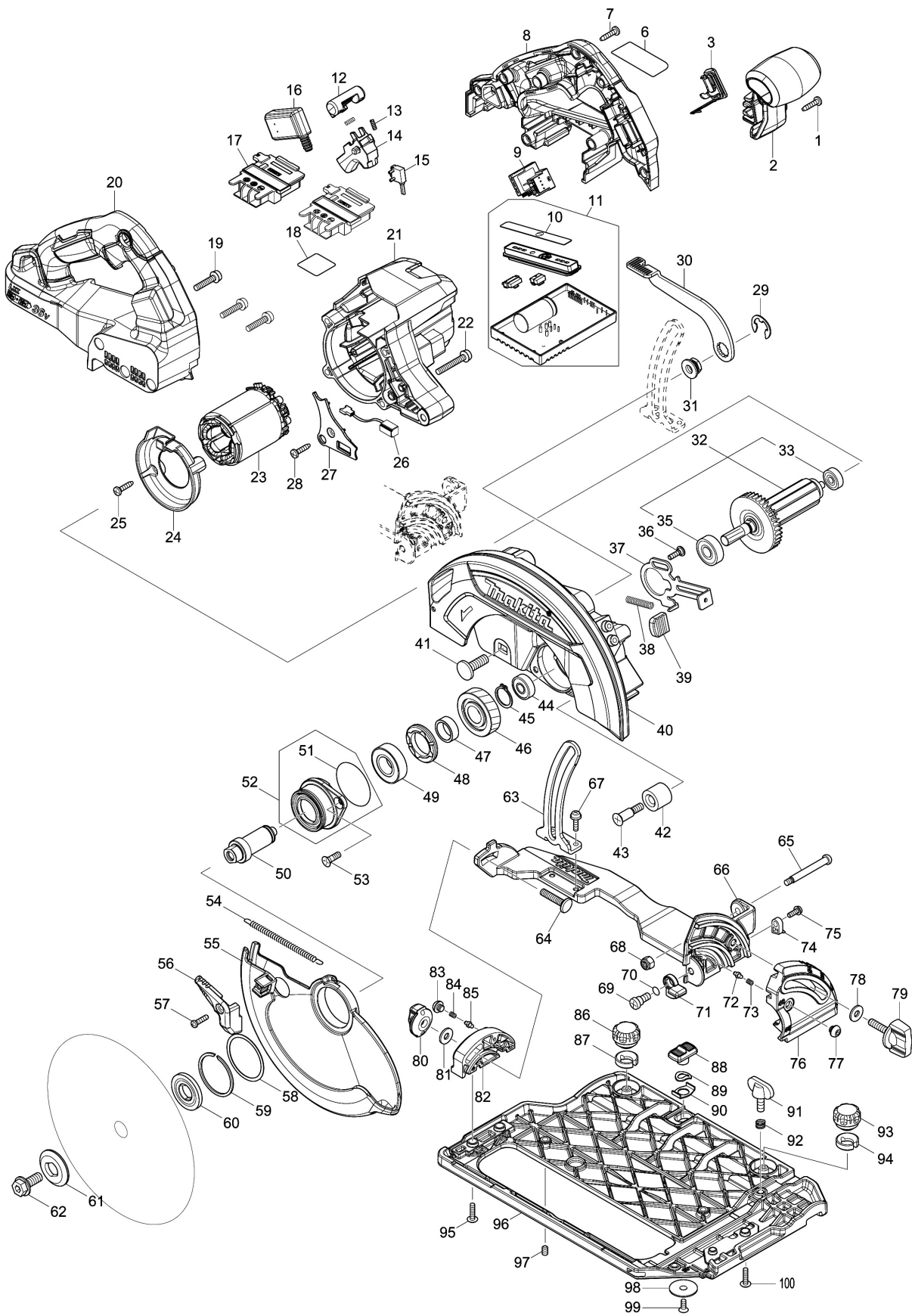


Model No.DHS783 185MM CORDLESS CIRCULAR SAW



Model No.DHS783 185MM CORDLESS CIRCULAR SAW

| Položka | Objednávacie číslo | Popis                   | Zmena | ks | New/Old | Možnosť 1 | Možnosť 2 | Poznámka |
|---------|--------------------|-------------------------|-------|----|---------|-----------|-----------|----------|
| 001     | 266326-2           | TAPPING SCREW 4X18      |       | 1  |         |           |           |          |
| 002     | 458750-5           | FRONT GRIP              |       | 1  |         |           |           |          |
| 003     | 140F99-0           | CAP COMPLETE            |       | 1  |         |           |           |          |
| C10     | 213218-6           | O RING 16               |       | 1  |         |           |           |          |
| C20     | 818H07-8           | CAP LABEL               |       | 1  |         |           |           |          |
| 006     | 855R05-1           | DHS783 NAME PLATE       |       | 1  |         |           |           |          |
| 007     | 266326-2           | TAPPING SCREW 4X18      |       | 8  |         |           |           |          |
| 008     | 183K52-3           | HANDLE SET              |       | 1  |         |           |           |          |
| C10     | 263005-3           | RUBBER PIN 6            |       | 4  |         |           |           |          |
| D10     |                    | INC. 20                 |       |    |         |           |           |          |
| 009     | 620750-7           | SUB CONTROLLER          |       | 1  |         |           |           |          |
| 010     | 812G25-2           | INDICATION LABEL        |       | 1  |         |           |           |          |
| 011     | 620984-2           | CONTROLLER COMPLETE     |       | 1  |         |           |           |          |
| D10     |                    | INC. 10                 |       |    |         |           |           |          |
| 012     | 419704-7           | LOCK OFF BUTTON         |       | 1  |         |           |           |          |
| 013     | 231433-0           | COMPRESSION SPRING 4    |       | 2  |         |           |           |          |
| 014     | 458594-3           | SWITCH LEVER            |       | 1  |         |           |           |          |
| 015     | 632M92-5           | SWITCH UNIT             |       | 1  |         |           |           |          |
| 016     | 651083-9           | SWITCH C3XA-1PSPM       |       | 1  |         |           |           |          |
| 017     | 643874-2           | TERMINAL                |       | 2  |         |           |           |          |
| 018     | 855R09-3           | DHS783 SERIAL NO. LABEL |       | 1  |         |           |           |          |
| 019     | 911243-8           | PAN HEAD SCREW M5X25    |       | 3  |         |           |           |          |
| 020     | 183K52-3           | HANDLE SET              |       | 1  |         |           |           |          |
| C10     | 263005-3           | RUBBER PIN 6            |       | 4  |         |           |           |          |
| D10     |                    | INC. 8                  |       |    |         |           |           |          |
| 021     | 458746-6           | MOTOR HOUSING           |       | 1  |         |           |           |          |
| 022     | 911258-5           | PAN HEAD SCREW M5X35    |       | 4  |         |           |           |          |
| 023     | 629375-4           | STATOR                  |       | 1  |         |           |           |          |
| 024     | 458749-0           | BAFFLE PLATE            |       | 1  |         |           |           |          |
| 025     | 266326-2           | TAPPING SCREW 4X18      |       | 2  |         |           |           |          |
| 026     | 620936-3           | LED CIRCUIT             |       | 1  |         |           |           |          |
| 027     | 458751-3           | LIGHT COVER             |       | 1  |         |           |           |          |
| 028     | 266326-2           | TAPPING SCREW 4X18      |       | 1  |         |           |           |          |
| 029     | 257953-6           | BOW STOP RING E-12      |       | 1  |         |           |           |          |
| 030     | 271447-7           | LEVER 110               |       | 1  |         |           |           |          |
| 031     | 252262-8           | COLLERED HEX. NUT M8    |       | 1  |         |           |           |          |
| 032     | 519534-7           | ROTOR ASSY              |       | 1  |         |           |           |          |
| D10     |                    | INC. 33,35              |       |    |         |           |           |          |
| 033     | 210022-4           | BALL BEARING 626DDW     |       | 1  |         |           |           |          |
| 035     | 210059-1           | BALL BEARING 6000DDW    |       | 1  |         |           |           |          |
| 036     | 251529-1           | + PAN HEAD SCREW M4X14  |       | 1  |         |           |           |          |
| 037     | 347441-2           | SHAFT LOCK              |       | 1  |         |           |           |          |
| 038     | 232381-6           | COMPRESSION SPRING 6    |       | 1  |         |           |           |          |
| 039     | 286039-9           | CAP                     |       | 1  |         |           |           |          |
| 040     | 140F30-6           | BLADE CASE COMPLETE     |       | 1  |         |           |           |          |

Model No.DHS783 185MM CORDLESS CIRCULAR SAW

| Položka | Objednávacie číslo | Popis                          | Zmena | ks | New/Old | Možnosť 1 | Možnosť 2 | Poznámka |
|---------|--------------------|--------------------------------|-------|----|---------|-----------|-----------|----------|
| C10     | 213434-0           | O RING 26                      |       | 1  |         |           |           |          |
| C20     | 818C45-0           | SCALE LABEL                    |       | 1  |         |           |           |          |
| 041     | 266396-1           | FLATHEAD SQUARENECKBOLT M8X24  |       | 1  |         |           |           |          |
| 042     | 262185-2           | RUBBER SLEEVE8                 |       | 1  |         |           |           |          |
| 043     | 251572-0           | + COUNTERSUNK HEAD SCREW M6X30 |       | 1  |         |           |           |          |
| 044     | 210029-0           | BALL BEARING 608ZZ             |       | 1  |         |           |           |          |
| 045     | 961057-5           | RETAINING RING S-17            |       | 1  |         |           |           |          |
| 046     | 226838-7           | HELICAL GEAR 37                |       | 1  |         |           |           |          |
| 047     | 257451-0           | RING 17                        |       | 1  |         |           |           |          |
| 048     | 285809-3           | BEARING RETAINER 23-36         |       | 1  |         |           |           |          |
| 049     | 210301-0           | BALL BEARING 6003DDW           |       | 1  |         |           |           |          |
| 050     | 327192-3           | SPINDLE                        |       | 1  |         |           |           |          |
| 051     | 213565-5           | O RING 42                      |       | 1  |         |           |           |          |
| 052     | 136021-7           | BEARING BOX ASSY               |       | 1  |         |           |           |          |
| D10     |                    | INC. 51                        |       |    |         |           |           |          |
| 053     | 265034-2           | + COUNTERSUNK HEAD SCREW M5X16 |       | 2  |         |           |           |          |
| 054     | 232467-6           | TENSION SPRING 4               |       | 1  |         |           |           |          |
| 055     | 319740-2           | SAFETY COVER                   |       | 1  |         |           |           |          |
| 056     | 271450-8           | LEVER 37                       |       | 1  |         |           |           |          |
| 057     | 265178-8           | PAN HEAD SCREW M4X16           |       | 1  |         |           |           |          |
| 058     | 267337-0           | FLAT WASHER 40                 |       | 1  |         |           |           |          |
| 059     | 257452-8           | RETAINING RING (EXT) WR-40     |       | 1  |         |           |           |          |
| 060     | 224593-5           | INNER FLANGE 35                |       | 1  |         |           |           |          |
| 061     | 224409-4           | OUTER FLANGE 35                |       | 1  |         |           |           |          |
| 062     | 266283-4           | HEX. SOCKET HEX. BOLT M8X20    |       | 1  |         |           |           |          |
| 063     | 347532-9           | DEPTH GUIDE                    |       | 1  |         |           |           |          |
| 064     | 251920-3           | CAP SQUARE NECK BOLT M6X30     |       | 1  |         |           |           |          |
| 065     | 265118-6           | + PAN HEAD SCREW M5            |       | 1  |         |           |           |          |
| 066     | 319829-6           | FRAME                          |       | 1  |         |           |           |          |
| 067     | 911516-9           | PAN HEAD SCREW M4X12           |       | 2  |         |           |           |          |
| 068     | 252103-8           | HEX. LOCK NUT M5-8             |       | 1  |         |           |           |          |
| 069     | 251267-5           | + PAN HEAD SCREW M6            |       | 1  |         |           |           |          |
| 070     | 213026-5           | O RING 7                       |       | 1  |         |           |           |          |
| 071     | 319827-0           | STOPPER                        |       | 1  |         |           |           |          |
| 072     | 263041-9           | SHOULDER PIN 3-5               |       | 1  |         |           |           |          |
| 073     | 231234-6           | COMPRESSION SPRING 3.5         |       | 1  |         |           |           |          |
| 074     | 419632-6           | POSITION PLATE                 |       | 1  |         |           |           |          |
| 075     | 911118-1           | PAN HEAD SCREW M4X12           |       | 1  |         |           |           |          |
| 076     | 319830-1           | FRONT ANGULAR PLATE            |       | 1  |         |           |           |          |
| 077     | 266559-9           | H.S.BUTTON HEAD BOLT M6X4      |       | 1  |         |           |           |          |
| 078     | 253111-2           | FLAT WASHER 6                  |       | 1  |         |           |           |          |
| 079     | 265776-8           | THUMB SCREW M6X26              |       | 1  |         |           |           |          |
| 080     | 252270-9           | THUMB NUT M6                   |       | 1  |         |           |           |          |
| 081     | 253111-2           | FLAT WASHER 6                  |       | 1  |         |           |           |          |

Model No.DHS783 185MM CORDLESS CIRCULAR SAW

| Položka | Objednávacie číslo | Popis                          | Zmena | ks | New/Old | Možnosť 1 | Možnosť 2 | Poznámka |
|---------|--------------------|--------------------------------|-------|----|---------|-----------|-----------|----------|
| 082     | 319831-9           | REAR ANGULAR PLATE             |       | 1  |         |           |           |          |
| 083     | 266559-9           | H.S.BUTTON HEAD BOLT M6X4      |       | 1  |         |           |           |          |
| 084     | 231234-6           | COMPRESSION SPRING 3.5         |       | 1  |         |           |           |          |
| 085     | 263041-9           | SHOULDER PIN 3-5               |       | 1  |         |           |           |          |
| 086     | 265775-0           | THUMB SCREW M4X3               |       | 1  |         |           |           |          |
| 087     | 419627-9           | HOLDER                         |       | 1  |         |           |           |          |
| 088     | 458092-7           | SLIDE LEVER                    |       | 1  |         |           |           |          |
| 089     | 253932-2           | WAVE WASHER 10                 |       | 1  |         |           |           |          |
| 090     | 345977-5           | PLATE                          |       | 1  |         |           |           |          |
| 091     | 265701-9           | THUMB SCREW M6X14              |       | 1  |         |           |           |          |
| 092     | 233376-2           | COMPRESSION SPRING 8           |       | 1  |         |           |           |          |
| 093     | 265775-0           | THUMB SCREW M4X3               |       | 1  |         |           |           |          |
| 094     | 419627-9           | HOLDER                         |       | 1  |         |           |           |          |
| 095     | 265174-6           | + TRUSS HEAD SCREW M4X16       |       | 2  |         |           |           |          |
| 096     | 319828-8           | BASE                           |       | 1  |         |           |           |          |
| 097     | 266225-8           | H.S.SET SCREW(FLAT POINT)M6X8  |       | 3  |         |           |           |          |
| 098     | 345748-0           | LOCK WASHER                    |       | 1  |         |           |           |          |
| 099     | 912112-6           | COUNTERSUNK HEAD SCREW M4X10   |       | 1  |         |           |           |          |
| 100     | 265174-6           | + TRUSS HEAD SCREW M4X16       |       | 2  |         |           |           |          |
| A01     | 164095-8           | GUIDE RULE                     |       | 1  |         |           |           |          |
| A02     | 196520-1           | DUST NOZZLE SET                |       | 1  |         |           |           |          |
| C10     | 911128-8           | P.H.SCREW M4X16 WITH WR        |       | 1  |         |           |           |          |
| A03     | 783204-6           | HEX. WRENCH 6                  |       | 1  |         |           |           |          |
| A04     | B-64185            | TCT BLADE190X24T WOOD EFFICUT  |       | 1  |         |           |           |          |
| A06C    | ***DC18RD          | DC18RD TWO PORT FAST CHARGER   |       | 1  |         |           |           |          |
| D10     |                    | COMPO-PARTS                    |       |    |         |           |           |          |
| A06D    | ***DC18RD          | DC18RD TWO PORT FAST CHARGER   |       | 1  |         |           |           |          |
| D10     |                    | COMPO-PARTS                    |       |    |         |           |           |          |
| A07C    | 197280-8           | BATTERY BL1850B SET            |       | 2  | *       |           |           |          |
| A07D    | 197280-8           | BATTERY BL1850B SET            |       | 2  | *       |           |           |          |
| A07-1C  | 197280-8           | BATTERY BL1850B SET            | O     | 2  |         |           |           |          |
| A07-1D  | 197280-8           | BATTERY BL1850B SET            | O     | 2  |         |           |           |          |
| A08C    | 819H68-1           | DHS783PT2J INDICATION LABEL    |       | 1  |         |           |           |          |
| A08D    | 819H70-4           | DHS783T2JU INDICATION LABEL    |       | 1  |         |           |           |          |
| A09C    | 819H69-9           | DHS783PT2J PLASTIC CASE LABEL  |       | 2  |         |           |           |          |
| A09D    | 819H71-2           | DHS783T2JU PLASTIC CASE LABEL  |       | 2  |         |           |           |          |
| A10C    | 821552-6           | CONNECTOR PLASTIC CASE (TYPE4) |       | 1  |         |           |           |          |
| C10     | 453974-8           | LATCH                          |       | 4  |         |           |           |          |
| A10D    | 821552-6           | CONNECTOR PLASTIC CASE (TYPE4) |       | 1  |         |           |           |          |
| C10     | 453974-8           | LATCH                          |       | 4  |         |           |           |          |
| A11C    | 839750-8           | INNER TRAY                     |       | 1  | *       |           |           |          |
| A11D    | 839750-8           | INNER TRAY                     |       | 1  | *       |           |           |          |

Model No.DHS783 185MM CORDLESS CIRCULAR SAW

| Položka | Objednávacie číslo | Popis                          | Zmena | ks | New/Old | Možnosť 1 | Možnosť 2 | Poznámka |
|---------|--------------------|--------------------------------|-------|----|---------|-----------|-----------|----------|
| A11-1C  | 835C85-3           | INNER TRAY                     | <     | 1  |         |           |           |          |
| A11-1D  | 835C85-3           | INNER TRAY                     | <     | 1  |         |           |           |          |
| A12C    | 821550-0           | CONNECTOR PLASTIC CASE (TYPE2) |       | 1  |         |           |           |          |
| C10     | 453974-8           | LATCH                          |       | 4  |         |           |           |          |
| A12D    | 821550-0           | CONNECTOR PLASTIC CASE (TYPE2) |       | 1  |         |           |           |          |
| C10     | 453974-8           | LATCH                          |       | 4  |         |           |           |          |
| A13C    | 454247-2           | PIN 4                          |       | 4  |         |           |           |          |
| A13D    | 454247-2           | PIN 4                          |       | 4  |         |           |           |          |
| A14C    | 837925-3           | WAVE SPONGE 240X350            |       | 1  |         |           |           |          |
| A14D    | 837925-3           | WAVE SPONGE 240X350            |       | 1  |         |           |           |          |
| A15C    | 837926-1           | WAVE SPONGE 285X380            |       | 1  |         |           |           |          |
| A15D    | 837926-1           | WAVE SPONGE 285X380            |       | 1  |         |           |           |          |
| A16B    | 198900-7           | WIRELESS UNIT SET              |       | 1  |         |           |           |          |
| A16D    | 198900-7           | WIRELESS UNIT SET              |       | 1  |         |           |           |          |

Please order the parts with part number.

Print Date 4/6/2019