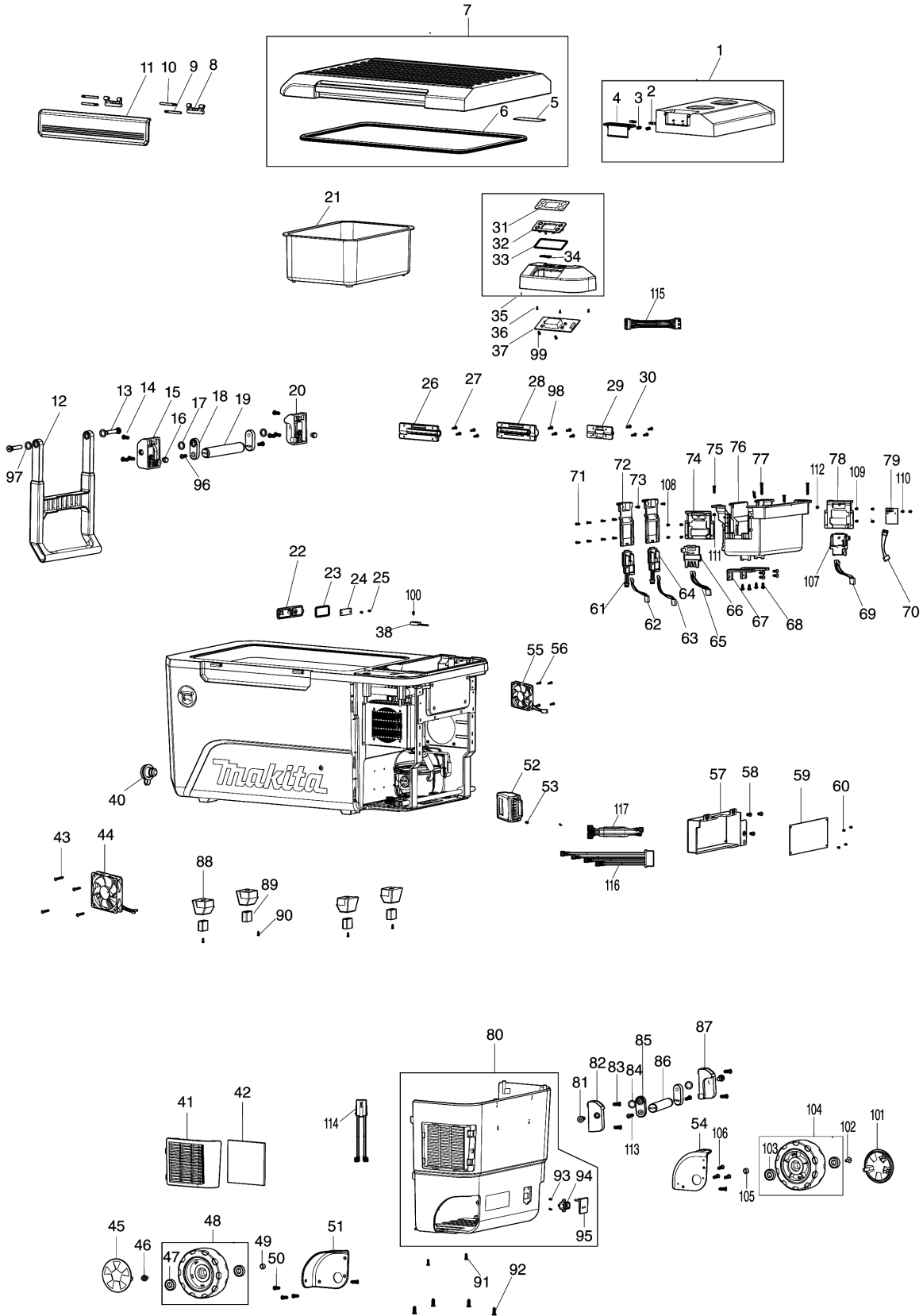


Model No.CW002G CORDLESS COOLER & WARMER BOX



Model No.CW002G CORDLESS COOLER & WARMER BOX

Položka	Objednávacie číslo	Popis	Zmena	ks	New/Old	Možnosť 1	Možnosť 2	Poznámka
001	WL00000237	BATTERY COVER ASSY		1				
D10		INC. 2-4						
002	WL00000090	SHAFT		2				
003	WL00000010	COMPRESSION SPRING 5MM		2				
004	WL00000238	HANDLE		1				
005	WL00000315	CAUTION LABEL		1				
006	WL00000240	SEALING		1				
007	WL00000316	TOP COVER ASSY		1				
D10		INC. 5,6						
008	WL00000242	CONNECTOR		2				
009	WL00000243	SHAFT		2				
010	WL00000244	SHAFT		2				
011	WL00000245	HANDLE		1				
012	WL00000246	DRAG HANDLE		1				
013	WL00000247	DRAG HANDLE SHAFT		2				
014	WL00000248	SCREW M6X16		4				
015	WL00000249	HANDLE BASE L		1				
016	WL00000250	SILICONE		2				
017	WL00000251	SILICONE RING		2				
018	WL00000252	CONNECTOR		2				
019	WL00000253	CARRY HANDLE ASSY		1				
020	WL00000254	HANDLE BASE R		1				
021	WL00000255	SEPARAT BOX		1				
022	WL00000018	THERMOSTAT TOP COVER		1				
023	WL00000019	SEALING C		1				
024	WL00000192	LIGHT BOARD ASSY		1				
025	WL00000017	TAPPING SCREW 3X8		2				
026	WL00000256	HINGE L		1				
027	WL00000257	SCREW 5X25		4				
028	WL00000258	HINGE R		1				
029	WL00000259	HINGE		1				
030	WL00000023	TAPPING SCREW 4X16		4				
031	WL00000072	CONTROL FILM B		1				
032	WL00000093	SWITCH PANEL		1				
033	WL00000013	SEALING B		1				
034	WL00000094	XGT LABEL		1				
035	WL00000330	CONTROL PANEL ASSY		1				
D10		INC. 31-34						
036	WL00000015	TAPPING SCREW 3X10		3				
037	WL00000261	DISPLAY PCB		1				
038	WL00000262	MEGNATIC SWITCH		1				
040	WL00000300	DRAIN COOK		1				
041	WL00000263	DUST PROOF COVER(BLUE)		1				
042	WL00000051	FILTER SPONGE		1				
043	WL00000104	SCREWS M4X30		4				

Please order the parts with part number.

Print Date 6/12/2022

Model No.CW002G CORDLESS COOLER & WARMER BOX

Položka	Objednávacie číslo	Popis	Zmena	ks	New/Old	Možnosť 1	Možnosť 2	Poznámka
044	WL00000264	FAN		1				
045	WL00000265	WHEEL COVER		1				
046	WL00000032	SCREW M6X16 WITH WASHER		1				
047	WL00000034	BEARING FOR SHAFT		2				
048	WL00000266	WHEEL ASSY		1				
D10		INC. 47						
049	WL00000035	SHAFT SLEEVE 12MM		1				
050	WL00000052	COUNTERSUNK TAPPING SCREW 4X18		4				
051	WL00000267	LEFT WHEEL COVER(BLUE)		1				
052	WL00000268	COMPRESSOR PCB		1				
053	WL00000269	SCREW M4X8		1				
054	WL00000270	RIGHT WHEEL COVER(BLUE)		1				
055	WL00000103	FAN A WITH CABLE		1	*			
055-1	WL00000103	FAN A WITH CABLE	O	1				
056	WL00000104	SCREWS M4X30		4				
057	WL00000271	PCB BOX		1				
058	WL00000205	PAN HEAD SCREWS M4X10		3				
059	WL00000272	MAIN PCB		1				
060	WL00000015	TAPPING SCREW 3X10		4				
061	WL00000273	BATTERY TERMINAL		1				
062	WL00000274	LEAD UNIT A		1				
063	WL00000275	LEAD UNIT B		1				
064	WL00000276	BATTERY TERMINAL		1				
065	WL00000277	LEAD UNIT C		1				
066	WL00000099	BATTERY TERMINAL		1				
067	WL00000278	BATTERY BOX BRACKET		2				
068	WL00000044	TAPPING SCREW 4X12		8				
069	WL00000279	LEAD UNIT D		1				
070	WL00000280	LEAD UNIT USB		1				
071	WL00000015	TAPPING SCREW 3X10		8				
072	WL00000281	BATTERY TERMINAL COVER		2				
073	WL00000098	SCREWS ST3X8		2				
074	WL00000282	BATTERY TERMINAL COVER		1				
075	WL00000052	COUNTERSUNK TAPPING SCREW 4X18		3				
076	WL00000283	BATTERY BOX		1				
077	WL00000284	SCREW ST 4X30		2				
078	WL00000101	BATTERY TERMINAL COVER		1				
079	WL00000285	USB PCB		1				
080	WL00000286	REAR COVER ASSY(BLUE)		1				
D10		INC. 93-95						
081	WL00000287	SHAFT		2				
082	WL00000288	HANDLE BASE L		1				
083	WL00000248	SCREW M6X16		4				
084	WL00000251	SILICONE RING		2				

Please order the parts with part number.

Print Date 6/12/2022

Model No.CW002G CORDLESS COOLER & WARMER BOX

Položka	Objednávacie číslo	Popis	Zmena	ks	New/Old	Možnosť 1	Možnosť 2	Poznámka
085	WL00000252	CONNECTOR		2				
086	WL00000253	CARRY HANDLE ASSY		1				
087	WL00000289	HANDLE BASE R		1				
088	WL00000290	SILICONE FOOT		4				
089	WL00000291	FOOT PAD		4				
090	WL00000023	TAPPING SCREW 4X16		4				
091	WL00000023	TAPPING SCREW 4X16		2				
092	WL00000052	COUNTERSUNK TAPPING SCREW 4X18		4				
093	WL00000098	SCREWS ST3X8		2				
094	WL00000292	DC IN SOCKET		1				
095	WL00000293	DC IN COVER		1				
096	WL00000248	SCREW M6X16		2				
097	WL00000251	SILICONE RING		2				
098	WL00000257	SCREW 5X25		4				
099	WL00000015	TAPPING SCREW 3X10		2				
100	WL00000015	TAPPING SCREW 3X10		1				
101	WL00000265	WHEEL COVER		1				
102	WL00000032	SCREW M6X16 WITH WASHER		1				
103	WL00000034	BEARING FOR SHAFT		2				
104	WL00000266	WHEEL ASSY		1				
D10		INC. 103						
105	WL00000035	SHAFT SLEEVE 12MM		1				
106	WL00000052	COUNTERSUNK TAPPING SCREW 4X18		4				
107	WL00000099	BATTERY TERMINAL		1				
108	WL00000015	TAPPING SCREW 3X10		4				
109	WL00000015	TAPPING SCREW 3X10		4				
110	WL00000015	TAPPING SCREW 3X10		2				
111	WL00000098	SCREWS ST3X8		1				
112	WL00000098	SCREWS ST3X8		1				
113	WL00000248	SCREW M6X16		2				
114	WL00000234	POWER CONNECTION WIRE		1				
115	WL00000235	DISPLAY PCB WIRE		1				
116	WL00000236	COMPRESSOR PCB WIRE		1				
117	WL00000175	COMPRESSOR INPUT WIRE		1				
A02	WL00000225	CIGAR LIGHTER		1				
C10	WL00000056	FUSE		1				
F01	WL00000313	AC ADAPTOR SET A		1				
C10	WL00000063	AC POWER CORD		1				

Please order the parts with part number.

Print Date 6/12/2022